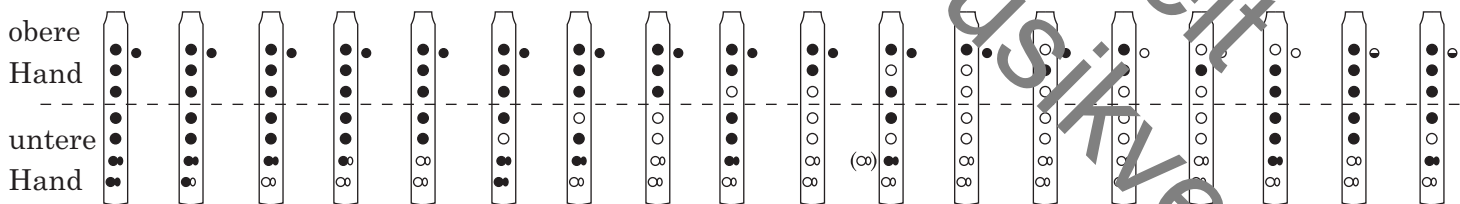
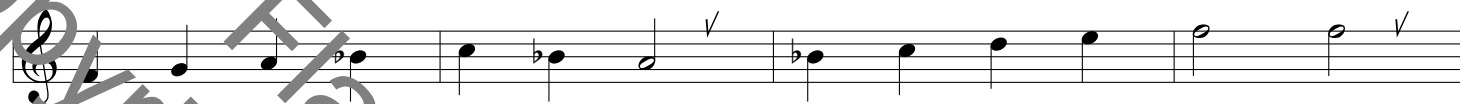
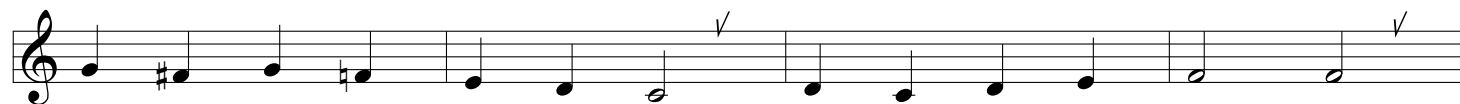
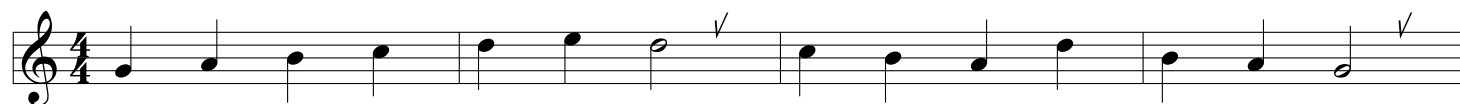


Zum Einspielen: Flautinos Weihnachtstonleiter



Die Melodiestimme für Sopranblockflöte ist ohne oktavierende 8 über dem Violinschlüssel notiert, da sie auch für Gesang vorgesehen ist.

Fröhliche Advents- und Weihnachtslieder



Jingle Bells

Traditional



Nr. 3

Chords: G G G H⁷ C

1. Dash - ing thro' the snow in a one - horse o - pen sleigh,

Chords: Am D⁷ D⁷ G

o'er the fields we gal - lop, laugh - ing all the way.

Chords: G G G H C

Bells on bob - tail ring, mak - ing spir - its bright, what

Chords: Am D Am D⁷ G D⁷

fun it is to ride and sing a sleigh - ing song to - night, oh!

Chords: G G G G

Jin - gle bells! Jin - gle bells! Jin - gle all the way!

Chords: Am D G Em A⁷ D

Oh, what fun it is to ride in a one - horse o - pen sleigh, oh!

God rest ye merry, gentlemen

aus England

Nr. 18

1. God rest ye merry, gentlemen, let
 noth - ing you dis - may! Re - mem - ber Christ our
 Sav - iour was born on Christ - mas day, to
 save us all from Sa - tan's pow'r when we were gone a -
 stray. O tid - ings of com - fort and

Em Em Em H⁷ Em Em H Am D Em H⁷ Em H⁷

Zwingt die Saiten in Cythara



T. + M.: Philipp Nicolai

4-stimmige Bearbeitung von J. S. Bach

Nr. 24

Zwingt die Sai - ten in Cy - tha - ra und lasst die sü - ße
dass ich mö - ge mit Je - su - lein, dem wun - der - schö - nen

Mu - si - ca ganz freu - der - lich er - schal - len,
Bräu - ti - gam mein in ste - ter Lie - be wal - len.